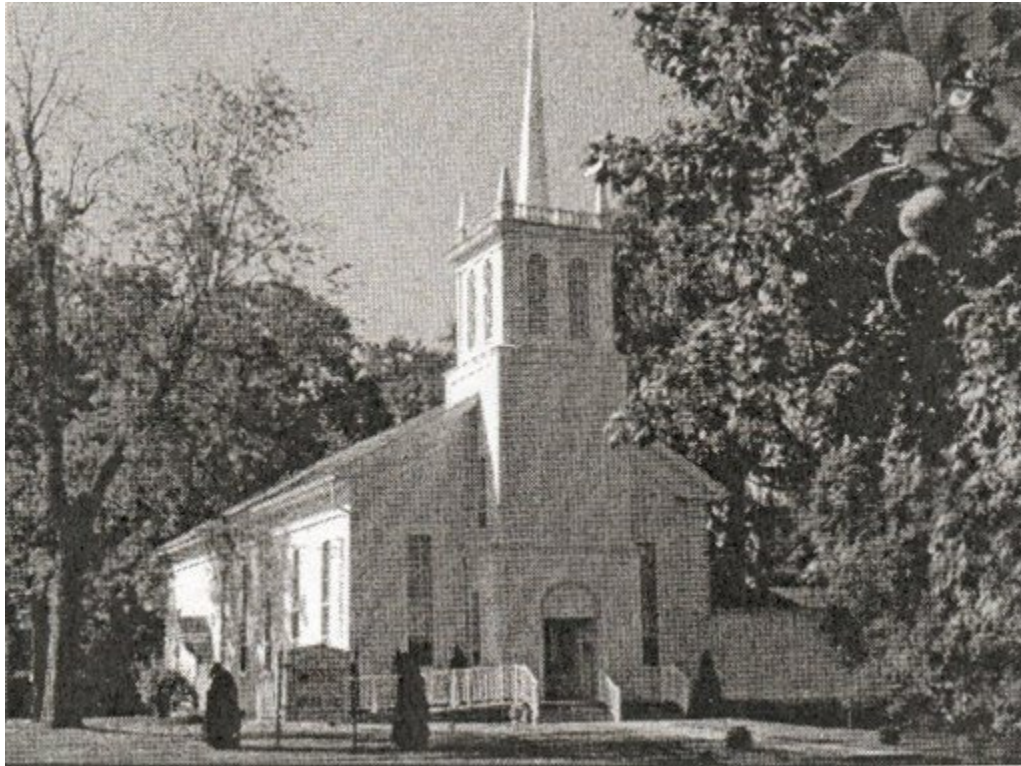


Table Grove Community Church



The Table Grove Community Church has a background in several area churches, On February 22, 1868 the Table Grove Universalist Church was founded and erected the following year. The Table Grove Christian Church was founded in 1851 and the Table Grove Presbyterian Church in 1893. The three congregations were having problems in maintaining adequate budgets to support resident pastors and full church programs so they merged in 1931. They chose the church building with a central location and were influenced by the beauty of the building and grounds of the Universalist Church with its adjoining parsonage. The architectural style includes Greek Revival and Italianate Order.

The front doors allow direct entry into the narthex. A walnut stair rail guides one to a balcony past a landing where the pull rope hangs for the belfry bell. The sanctuary is reached through double doors where the handsome oak pews, originally from the Christian Church, blend with the chancel-niche. The active congregation performs valuable services, and during World War II, when Camp Ellis was an adjacent neighbor, this church opened its doors to servicemen and their families. This historic and beautiful building was listed on the National Register of Historic Places in 1979.